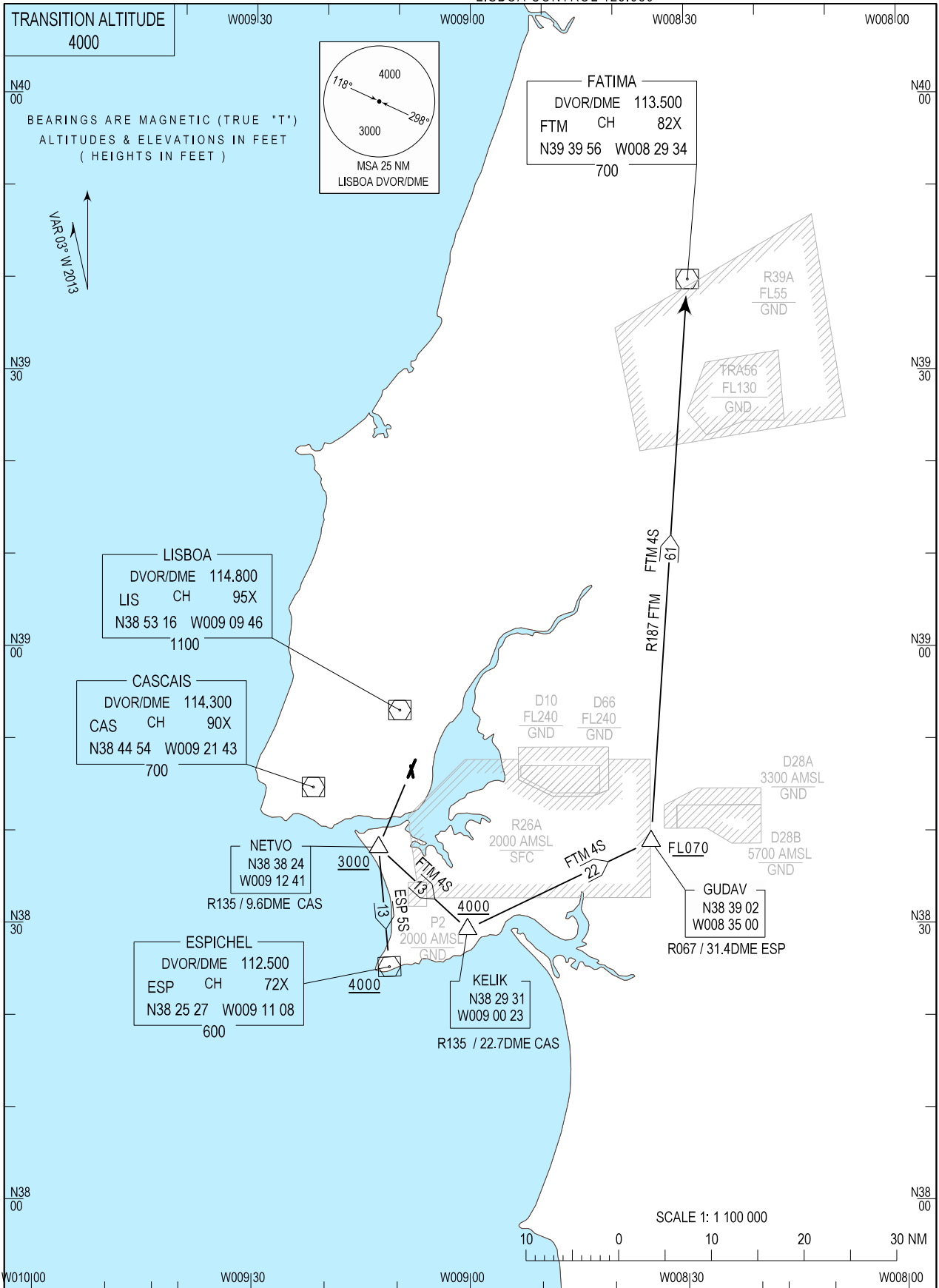


STANDARD DEPARTURE CHART -  
INSTRUMENT (SID) - ICAO

LISBOA DEP INFORMATION 121.955  
LISBOA TOWER 118.105  
LISBOA APPROACH 119.105  
LISBOA CONTROL 123.980

LISBOA / LPPT  
RWY21  
ESP 5S, FTM 4S



New CS and FREQ. New procedures. Chart redrawn.

STANDARD INSTRUMENT DEPARTURE (SID) RWY 21

Designator	Route	After Take-off		Remarks
		Climb to ALT/FL	Contact	
<b>ESP5S</b>	Climb straight ahead to position NETVO (RDL135 9.6 NM CAS DVOR/DME +3000 ft). Turn left to intercept and proceed on RDL 358 ESP to position ESP DVOR/DME +4000ft.	FL060	LISBOA APPROACH. When passing 1000ft QNH mentioning only the call sign and passing altitude. 119.105 MHz as announced by ATIS departure.	-
<b>FTM4S</b>	Climb straight ahead to position NETVO (RDL135 9.6 NM CAS DVOR/DME +3000 ft). Turn left to intercept and proceed on RDL 135 CAS to position KELIK. (RDL135 22.7 NM CAS DVOR/DME +4000 ft). Turn left to intercept and proceed on RDL 067 ESP to GUDAV (RDL067 31.4 NM ESP DVOR/DME + FL070). Turn left to intercept and proceed on RDL 187 FTM to FTM DVOR/DME.	FL060	LISBOA APPROACH. When passing 1000ft QNH mentioning only the call sign and passing altitude. 119.105 MHz as announced by ATIS departure.	-