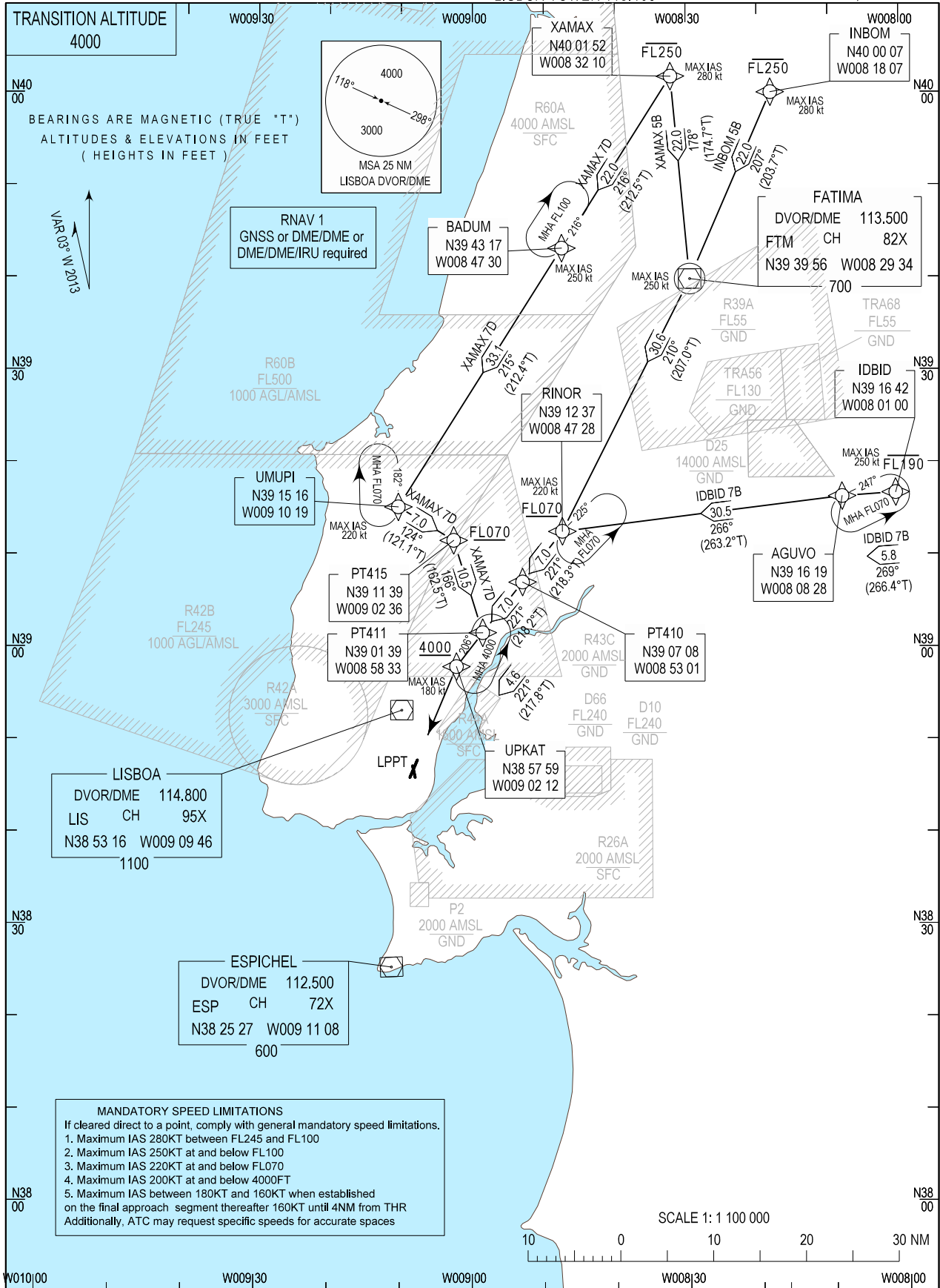


STANDARD ARRIVAL CHART - INSTRUMENT (STAR) - ICAO

LISBOA ARR INFORMATION 124.155  
LISBOA CONTROL 123.980  
LISBOA APPROACH 119.105  
LISBOA ARRIVAL 125.130  
LISBOA TOWER 118.105

LISBOA / LPPT  
RNAV Rwy 21  
IDBID 7B, INBOM 5B  
XAMAX 5B, XAMAX 7D



STANDARD INSTRUMENT ARRIVAL (STAR) RUNWAY 21										
RNAV 1 – GNSS or DME/DME or DME/DME/IRU										
STAR RNAV 1 IDBIB 7B RWY 21										
Procedure Coding Table										
Path Terminator	Waypoint			Course/Track MAG (True)	Dist NM	Turn Direction	Constraints		Nav Specs	Remarks
	Identifier	Flyover	Coordinates				Level	Speed		
IF	IDBIB	-	391642.00N 0080100.00W	-	-	-	-FL190	250Kt	RNAV 1	Clearance limit: UPKAT
TF	AGUVO	-	391619.32N 0080828.24W	269 (266.4)	5.81	-	-	-	RNAV 1	
TF	RINOR	-	391237.34N 0084727.66W	266 (263.2)	30.52	-	+FL070	220Kt	RNAV 1	
TF	PT410	-	390708.47N 0085300.93W	221 (218.3)	6.98	Left	-	-	RNAV 1	
TF	PT411	-	390139.34N 0085833.34W	221 (218.2)	6.98	-	-	-	RNAV 1	
TF	UPKAT	-	385759.04N 0090212.05W	221 (217.8)	4.64	-	+4000ft	180Kt	RNAV 1	

STAR RNAV 1 INBOM 5B RWY 21										
Path Terminator	Waypoint			Course/Track MAG (True)	Dist NM	Turn Direction	Constraints		Nav Specs	Remarks
	Identifier	Flyover	Coordinates				Level	Speed		
IF	INBOM	-	400006.91N 0081807.21W	-	-	-	-FL250	280Kt	RNAV 1	Clearance limit: UPKAT
TF	FTM	Yes	393956.45N 0082933.54W	207 (203.7)	22.00	-	-	250Kt	RNAV 1	
TF	RINOR	-	391237.34N 0084727.66W	210 (207.0)	30.62	-	+FL070	220Kt	RNAV 1	
TF	PT410	-	390708.47N 0085300.93W	221 (218.3)	6.98	Right	-	-	RNAV 1	
TF	PT411	-	390139.34N 0085833.34W	221 (218.2)	6.98	-	-	-	RNAV 1	
TF	UPKAT	-	385759.04N 0090212.05W	221 (217.8)	4.64	-	+4000ft	180Kt	RNAV 1	

STAR RNAV 1 XAMAX 5B RWY 21										
Path Terminator	Waypoint			Course/Track MAG (True)	Dist NM	Turn Direction	Constraints		Nav Specs	Remarks
	Identifier	Flyover	Coordinates				Level	Speed		
IF	XAMAX	-	400151.96N 0083210.34W	-	-	-	-FL250	280Kt	RNAV 1	Clearance limit: UPKAT
TF	FTM	Yes	393956.45N 0082933.54W	178 (174.7)	22.00	-	-	250Kt	RNAV 1	
TF	RINOR	-	391237.34N 0084727.66W	210 (207.0)	30.62	Right	+FL070	220Kt	RNAV 1	
TF	PT410	-	390708.47N 0085300.93W	221 (218.3)	6.98	Right	-	-	RNAV 1	
TF	PT411	-	390139.34N 0085833.34W	221 (218.2)	6.98	-	-	-	RNAV 1	
TF	UPKAT	-	385759.04N 0090212.05W	221 (217.8)	4.64	-	+4000ft	180Kt	RNAV 1	

STAR RNAV 1 XAMAX 7D RWY 21										
Path Terminator	Waypoint			Course/Track MAG (True)	Dist NM	Turn Direction	Constraints		Nav Specs	Remarks
	Identifier	Flyover	Coordinates				Level	Speed		
IF	XAMAX	-	400151.96N 0083210.34W	-	-	-	-FL250	280Kt	RNAV 1	Clearance limit: UPKAT To be used pending on military conditions.
TF	BADUM	-	394317.16N 0084730.26W	216 (212.5)	22.00	-	-	250Kt	RNAV 1	
TF	UMUPI	-	391516.46N 0091018.55W	215 (212.4)	33.09	-	-	220Kt	RNAV 1	
TF	PT415	-	391139.36N 0090235.77W	124 (121.1)	7.00	Left	+FL070	-	RNAV 1	
TF	PT411	-	390139.34N 0085833.34W	166 (162.5)	10.48	Right	-	-	RNAV 1	
TF	UPKAT	-	385759.04N 0090212.05W	221 (217.8)	4.64	Right	+4000ft	180Kt	RNAV 1	