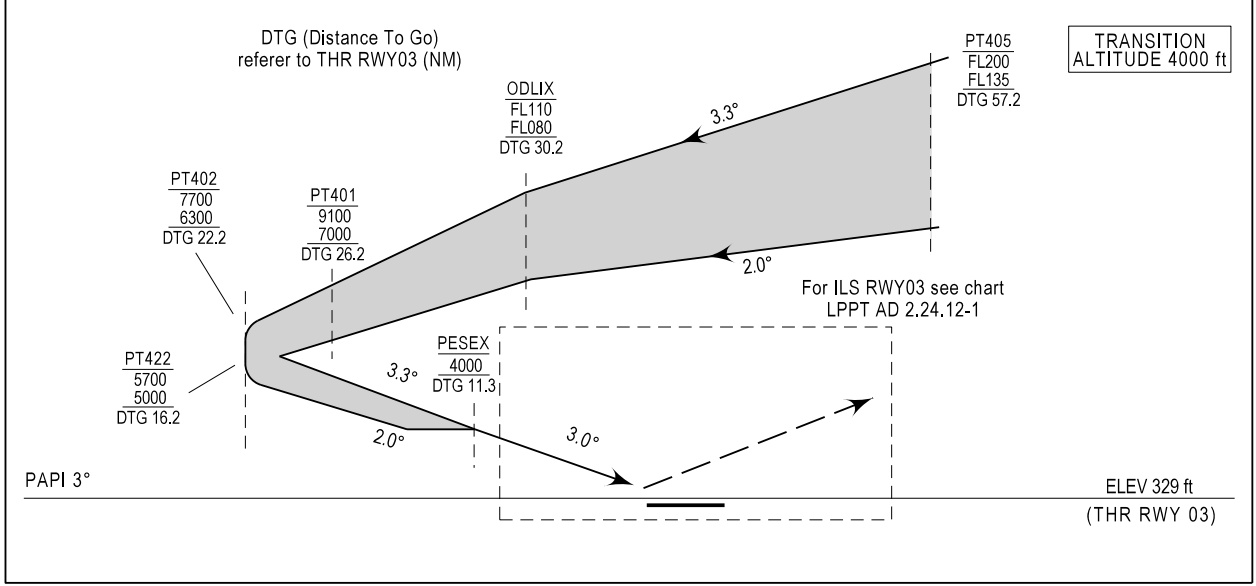
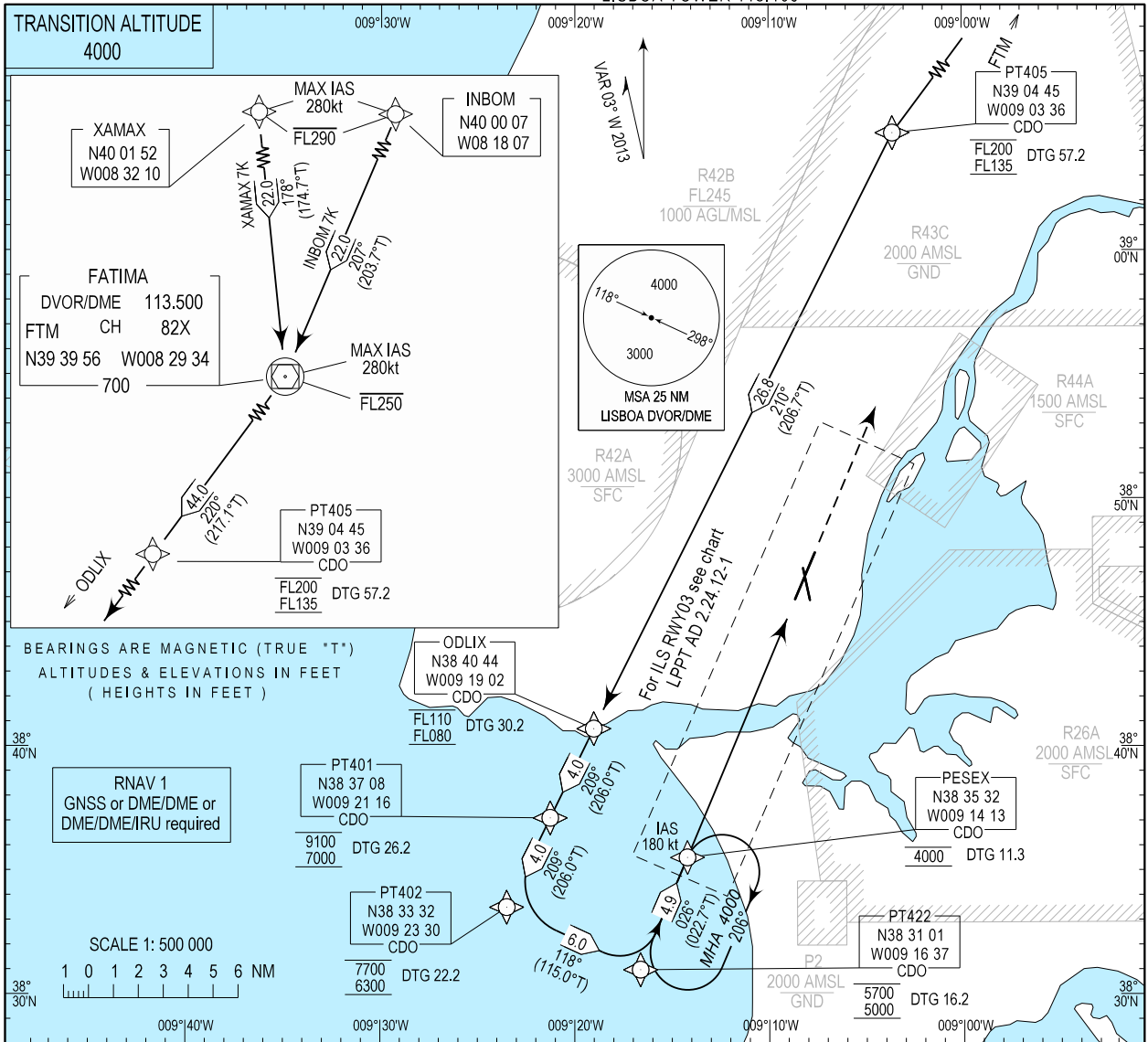


RNAV STAR CDO  
STANDARD ARRIVAL CHART -  
INSTRUMENT (STAR)

LISBOA ARR INFORMATION 124.155  
LISBOA CONTROL 123.980  
LISBOA APPROACH 119.105  
LISBOA ARRIVAL 125.130  
LISBOA TOWER 118.105

LISBOA / LPPT  
CDO RWY 03  
INBOM 7K  
XAMAX 7K



New CS and FREQ. New procedures. Page renumbered. Chart redrawn.

RNAV 1 – GNSS or DME/DME or DME/DME/IRU

RWY03 – CDO STAR RNAV 1 INBOM 7K

Path Terminator	Waypoint			Course/Track MAG (True)	Dist NM	Turn Direction	Constraints		Nav Specs	Remarks
	Identifier	Flyover	Coordinates				Level	Speed		
IF	INBOM	No	400006.9084N 0081807.2063W	-	-	-	- FL290	280Kt	RNAV 1	
TF	FTM	Yes	393956.4527N 0082933.5366W	206.723 (203.673)	22.000	-	- FL250	280Kt	RNAV 1	Clearance limit: PESEX
TF	PT405	No	390444.8357N 0090336.1348W	220.129 (217.079)	43.970	Right	-FL200 +FL135	-	RNAV 1	
TF	ODLIX	No	384044.1220N 0091901.5023W	209.790 (206.740)	26.842	Left	-FL110 +FL080	-	RNAV 1	
TF	PT401	No	383708.2488N 0092115.8332W	209.073 (206.023)	3.999	-	-9100ft +7000ft	-	RNAV 1	
TF	PT402	No	383332.3345N 0092329.9441W	209.051 (206.001)	3.999	-	-7700ft +6300ft	-	RNAV 1	
TF	PT422	No	383100.9209N 0091637.3373W	118.057 (115.007)	5.956	Left	-5700ft +5000ft	-	RNAV 1	
TF	PESEX	No	383532.4200N 0091412.6941W	025.739 (022.689)	4.900	Left	@4000ft	180Kt	RNAV 1	

RWY03 – CDO STAR RNAV 1 XAMAX 7K

Path Terminator	Waypoint			Course/Track MAG (True)	Dist NM	Turn Direction	Constraints		Nav Specs	Remarks
	Identifier	Flyover	Coordinates				Level	Speed		
IF	XAMAX	No	400151.9619N 0083210.3388W	-	-	-	- FL290	280Kt	RNAV 1	
TF	FTM	Yes	393956.4527N 0082933.5366W	177.787 (174.737)	22.000	-	- FL250	-	RNAV 1	Clearance limit: PESEX
TF	PT405	No	390444.8357N 0090336.1348W	220.129 (217.079)	43.970	Right	-FL200 +FL135	-	RNAV 1	
TF	ODLIX	No	384044.1220N 0091901.5023W	209.790 (206.740)	26.842	Left	-FL110 +FL080	-	RNAV 1	
TF	PT401	No	383708.2488N 0092115.8332W	209.073 (206.023)	3.999	-	-9100ft +7000ft	-	RNAV 1	
TF	PT402	No	383332.3345N 0092329.9441W	209.051 (206.001)	3.999	-	-7700ft +6300ft	-	RNAV 1	
TF	PT422	No	383100.9209N 0091637.3373W	118.057 (115.007)	5.956	Left	-5700ft +5000ft	-	RNAV 1	
TF	PESEX	No	383532.4200N 0091412.6941W	025.739 (022.689)	4.900	Left	@4000ft	180Kt	RNAV 1	