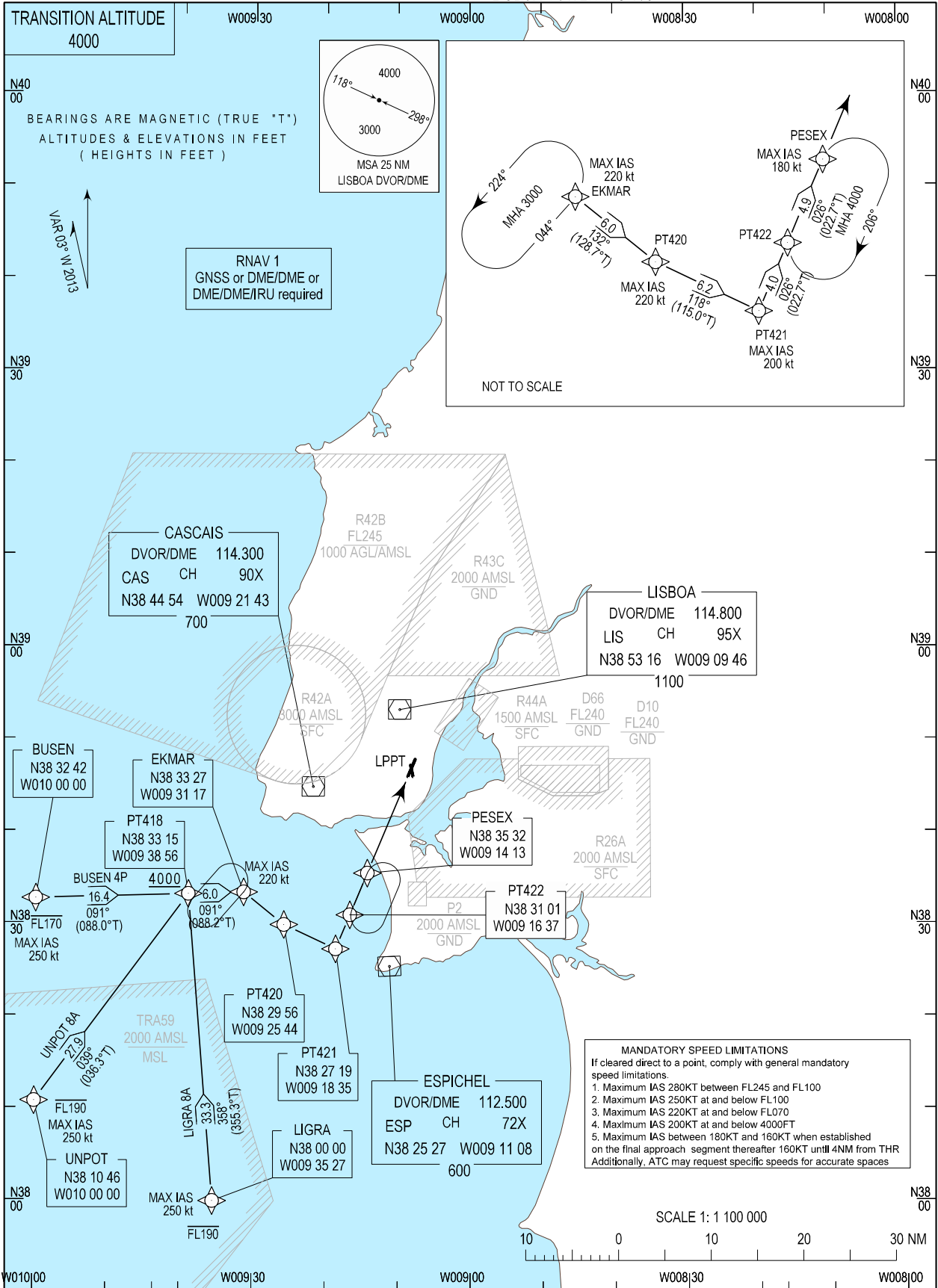


STANDARD ARRIVAL CHART -
INSTRUMENT (STAR) - ICAO

LISBOA ARR INFORMATION 124.155
LISBOA CONTROL 123.980
LISBOA APPROACH 119.105
LISBOA ARRIVAL 125.130
LISBOA TOWER 118.105

LISBOA / LPPT
RNAV RWY 03/35
BUSEN 4P, LIGRA 8A, UNPOT 8A



STANDARD INSTRUMENT ARRIVAL (STAR) RUNWAY 03/35
RNAV 1 – GNSS or DME/DME or DME/DME/IRU
Procedure Coding Table

Lisboa STAR RNAV 1 BUSEN 4P

Path Terminator	Waypoint			Course/Track MAG (True)	Dist NM	Turn Direction	Constraints		Nav Specs	Remarks
	Identifier	Flyover	Coordinates				Level	Speed		
IF	BUSEN	No	383241.9833N 0100000.0000W	-	-	-	- FL170	250Kt	RNAV 1	Clearance limit: PESEX Critical DME: ESP, MTR and NSA at FL060 until 60NM
TF	PT418	No	383315.3808N 0093855.9127W	091.014 (087.964)	16.357	-	+4000ft	-	RNAV 1	
TF	EKMAR	No	383326.5606N 0093117.1991W	091.203 (088.183)	6.000	-	+4000ft	220Kt	RNAV 1	
TF	PT420	No	382956.3065N 0092543.8749W	131.786 (128.736)	5.591	Right	+4000ft	220Kt	RNAV 1	
TF	PT421	No	382719.2495N 0091835.1898W	118.002 (114.952)	6.190	Left	+4000ft	200Kt	RNAV 1	
TF	PT422	No	383100.9209N 0091637.3373W	025.719 (022.669)	4.000	Left	+4000ft	-	RNAV 1	
TF	PESEX	No	383532.4200N 0091412.6941W	025.739 (022.689)	4.900	-	+4000ft	180Kt	RNAV 1	

Lisboa STAR RNAV 1 LIGRA 8A

Path Terminator	Waypoint			Course/Track MAG (True)	Dist NM	Turn Direction	Constraints		Nav Specs	Remarks
	Identifier	Flyover	Coordinates				Level	Speed		
IF	LIGRA	No	380000.0000N 0093527.0620W	-	-	-	-FL190	250Kt	RNAV 1	Clearance limit: PESEX
TF	PT418	No	383315.3808N 0093855.9127W	358.351 (355.301)	33.334	-	+4000ft	-	RNAV 1	
TF	EKMAR	No	383326.5606N 0093117.1991W	091.203 (088.183)	6.000	Right	+4000ft	220Kt	RNAV 1	
TF	PT420	No	382956.3065N 0092543.8749W	131.786 (128.736)	5.591	Right	+4000ft	220Kt	RNAV 1	
TF	PT421	No	382719.2495N 0091835.1898W	118.002 (114.952)	6.190	Left	+4000ft	200Kt	RNAV 1	
TF	PT422	No	383100.9209N 0091637.3373W	025.719 (022.669)	4.000	Left	+4000ft	-	RNAV 1	
TF	PESEX	No	383532.4200N 0091412.6941W	025.739 (022.689)	4.900	-	+4000ft	180Kt	RNAV 1	

Lisboa STAR RNAV 1 UNPOT 8A

Path Terminator	Waypoint			Course/Track MAG (True)	Dist NM	Turn Direction	Constraints		Nav Specs	Remarks
	Identifier	Flyover	Coordinates				Level	Speed		
IF	UNPOT	No	381045.6294N 0100000.0000W	-	-	-	- FL190	250Kt	RNAV 1	Clearance limit: PESEX
TF	PT418	No	383315.3808N 0093855.9127W	039.344 (036.294)	27.920	-	+4000ft	-	RNAV 1	
TF	EKMAR	No	383326.5606N 0093117.1991W	091.203 (088.183)	6.000	Right	+4000ft	220Kt	RNAV 1	
TF	PT420	No	382956.3065N 0092543.8749W	131.786 (128.736)	5.591	Right	+4000ft	220Kt	RNAV 1	
TF	PT421	No	382719.2495N 0091835.1898W	118.002 (114.952)	6.190	Left	+4000ft	200Kt	RNAV 1	
TF	PT422	No	383100.9209N 0091637.3373W	025.719 (022.669)	4.000	Left	+4000ft	-	RNAV 1	
TF	PESEX	No	383532.4200N 0091412.6941W	025.739 (022.689)	4.900	-	+4000ft	180Kt	RNAV 1	