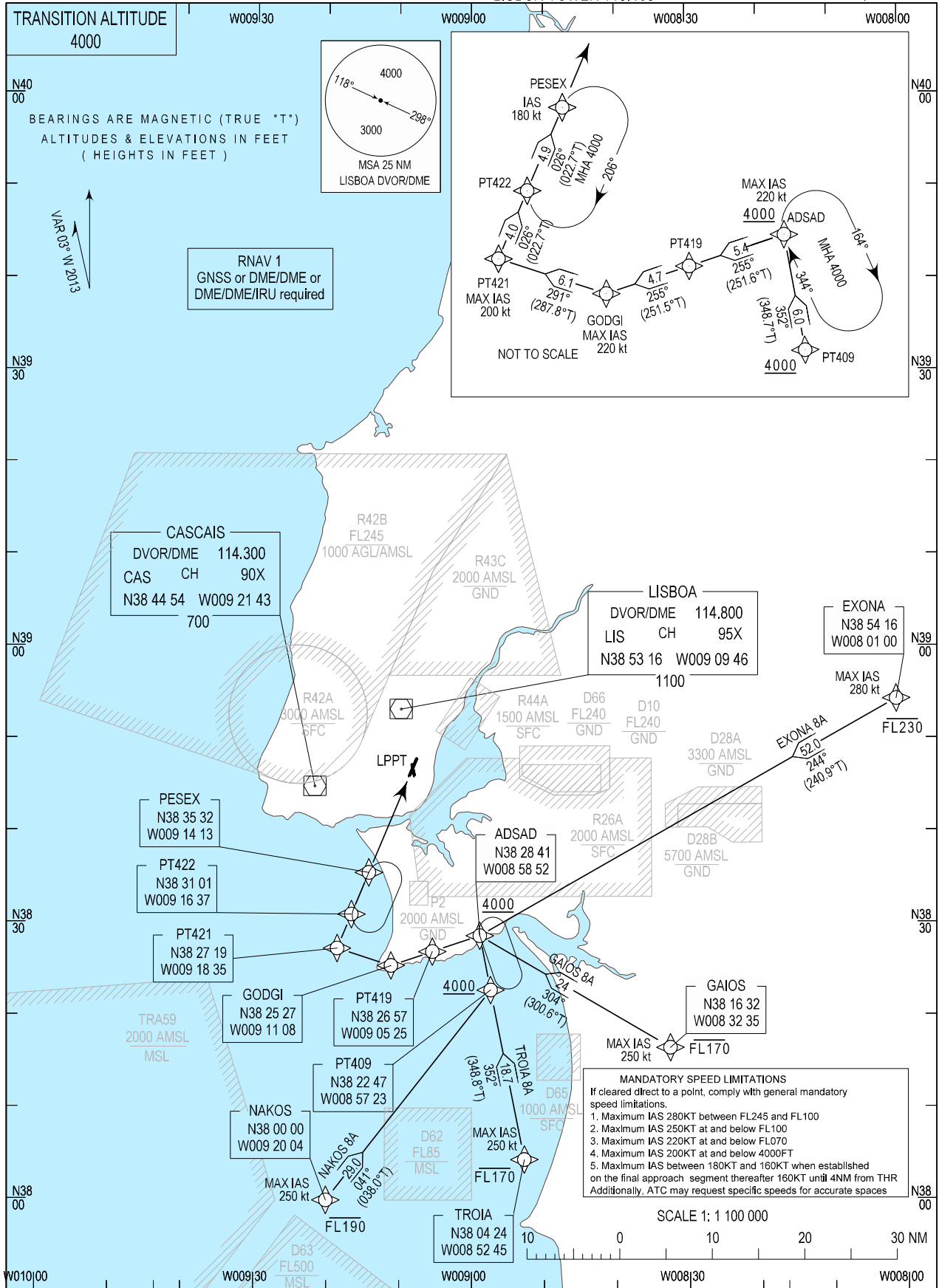


STANDARD ARRIVAL CHART -
INSTRUMENT (STAR) - ICAO

LISBOA ARR INFORMATION 124.155
LISBOA CONTROL 123.980
LISBOA APPROACH 119.105
LISBOA ARRIVAL 125.130
LISBOA TOWER 118.105

LISBOA / LPPT
RNAV Rwy 03/35
EXONA 8A, GAIOS 8A
NAKOS 8A, TROIA 8A



Max IAS changed at NAKOS, TROIA and GAIOS.

STAR Procedure Coding Table

Lisboa STAR RNAV 1 EXONA 8A

Path Terminator	Waypoint			Course/Track MAG (True)	Dist NM	Turn Direction	Constraints		Nav Specs	Remarks
	Identifier	Flyover	Coordinates				Level	Speed		
IF	EXONA	No	385415.8880N 0080100.0000W	-	-	-	-FL230	280Kt	RNAV 1	Clearance limit: PESEX
TF	ADSAD	No	382840.6458N 0085852.2709W	243.923 (240.873)	52.023	-	+4000ft	220Kt	RNAV 1	
TF	PT419	No	382657.3398N 0090525.4344W	254.605 (251.555)	5.426	Right	+4000ft	-	RNAV 1	
TF	GODGI	No	382526.8748N 0091108.3546W	254.537 (251.487)	4.736	-	+4000ft	220Kt	RNAV 1	
TF	PT421	No	382719.2495N 0091835.1898W	290.821 (287.771)	6.143	Right	+4000ft	200Kt	RNAV 1	
TF	PT422	No	383100.9209N 0091637.3373W	025.719 (022.669)	4.000	Right	+4000ft	-	RNAV 1	
TF	PESEX	No	383532.4200N 0091412.6941W	025.739 (022.689)	4.900	-	+4000ft	180Kt	RNAV 1	

Lisboa STAR RNAV 1 GAIOS 8A

Path Terminator	Waypoint			Course/Track MAG (True)	Dist NM	Turn Direction	Constraints		Nav Specs	Remarks
	Identifier	Flyover	Coordinates				Level	Speed		
IF	GAIOS	No	381631.8849N 0083235.1908W	-	-	-	-FL170	250Kt	RNAV 1	Clearance limit: PESEX
TF	ADSAD	No	382840.6458N 0085852.2709W	303.600 (300.550)	23.967	-	+4000ft	220Kt	RNAV 1	
TF	PT419	No	382657.3398N 0090525.4344W	254.605 (251.555)	5.426	Left	+4000ft	-	RNAV 1	
TF	GODGI	No	382526.8748N 0091108.3546W	254.537 (251.487)	4.736	-	+4000ft	220Kt	RNAV 1	
TF	PT421	No	382719.2495N 0091835.1898W	290.821 (287.771)	6.143	Right	+4000ft	200Kt	RNAV 1	
TF	PT422	No	383100.9209N 0091637.3373W	025.719 (022.669)	4.000	Right	+4000ft	-	RNAV 1	
TF	PESEX	No	383532.4200N 0091412.6941W	025.739 (022.689)	4.900	-	+4000ft	180Kt	RNAV 1	

Lisboa STAR RNAV 1 NAKOS 8A

Path Terminator	Waypoint			Course/Track MAG (True)	Dist NM	Turn Direction	Constraints		Nav Specs	Remarks
	Identifier	Flyover	Coordinates				Level	Speed		
IF	NAKOS	No	380000.0000N 0092004.1761W	-	-	-	-FL190	250Kt	RNAV 1	Clearance limit: PESEX
TF	PT409	No	382247.2141N 0085722.7787W	041.096 (038.046)	28.950	-	+4000ft	-	RNAV 1	
TF	ADSAD	No	382840.6458N 0085852.2709W	351.793 (348.743)	6.000	Left	+4000ft	220Kt	RNAV 1	
TF	PT419	No	382657.3398N 0090525.4344W	254.605 (251.555)	5.426	Left	+4000ft	-	RNAV 1	
TF	GODGI	No	382526.8748N 0091108.3546W	254.537 (251.487)	4.736	-	+4000ft	220Kt	RNAV 1	
TF	PT421	No	382719.2495N 0091835.1898W	290.821 (287.771)	6.143	Right	+4000ft	200Kt	RNAV 1	
TF	PT422	No	383100.9209N 0091637.3373W	025.719 (022.669)	4.000	Right	+4000ft	-	RNAV 1	
TF	PESEX	No	383532.4200N 0091412.6941W	025.739 (022.689)	4.900	-	+4000ft	180Kt	RNAV 1	

Lisboa STAR RNAV 1 TROIA 8A

Path Terminator	Waypoint			Course/Track MAG (True)	Dist NM	Turn Direction	Constraints		Nav Specs	Remarks
	Identifier	Flyover	Coordinates				Level	Speed		
IF	TROIA	No	380423.7068N 0085244.9481W	-	-	-	-FL170	250Kt	RNAV 1	Clearance limit: PESEX
TF	PT409	No	382247.2141N 0085722.7787W	351.841 (348.791)	18.731	-	+4000ft	-	RNAV 1	
TF	ADSAD	No	382840.6458N 0085852.2709W	351.793 (348.743)	6.000	-	+4000ft	220Kt	RNAV 1	
TF	PT419	No	382657.3398N 0090525.4344W	254.605 (251.555)	5.426	Left	+4000ft	-	RNAV 1	
TF	GODGI	No	382526.8748N 0091108.3546W	254.537 (251.487)	4.736	-	+4000ft	220Kt	RNAV 1	
TF	PT421	No	382719.2495N 0091835.1898W	290.821 (287.771)	6.143	Right	+4000ft	200Kt	RNAV 1	
TF	PT422	No	383100.9209N 0091637.3373W	025.719 (022.669)	4.000	Right	+4000ft	-	RNAV 1	
TF	PESEX	No	383532.4200N 0091412.6941W	025.739 (022.689)	4.900	-	+4000ft	180Kt	RNAV 1	