

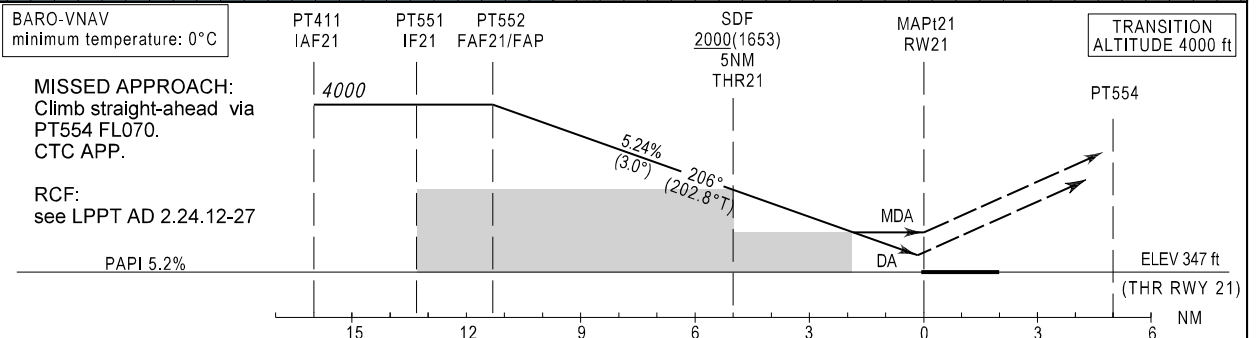
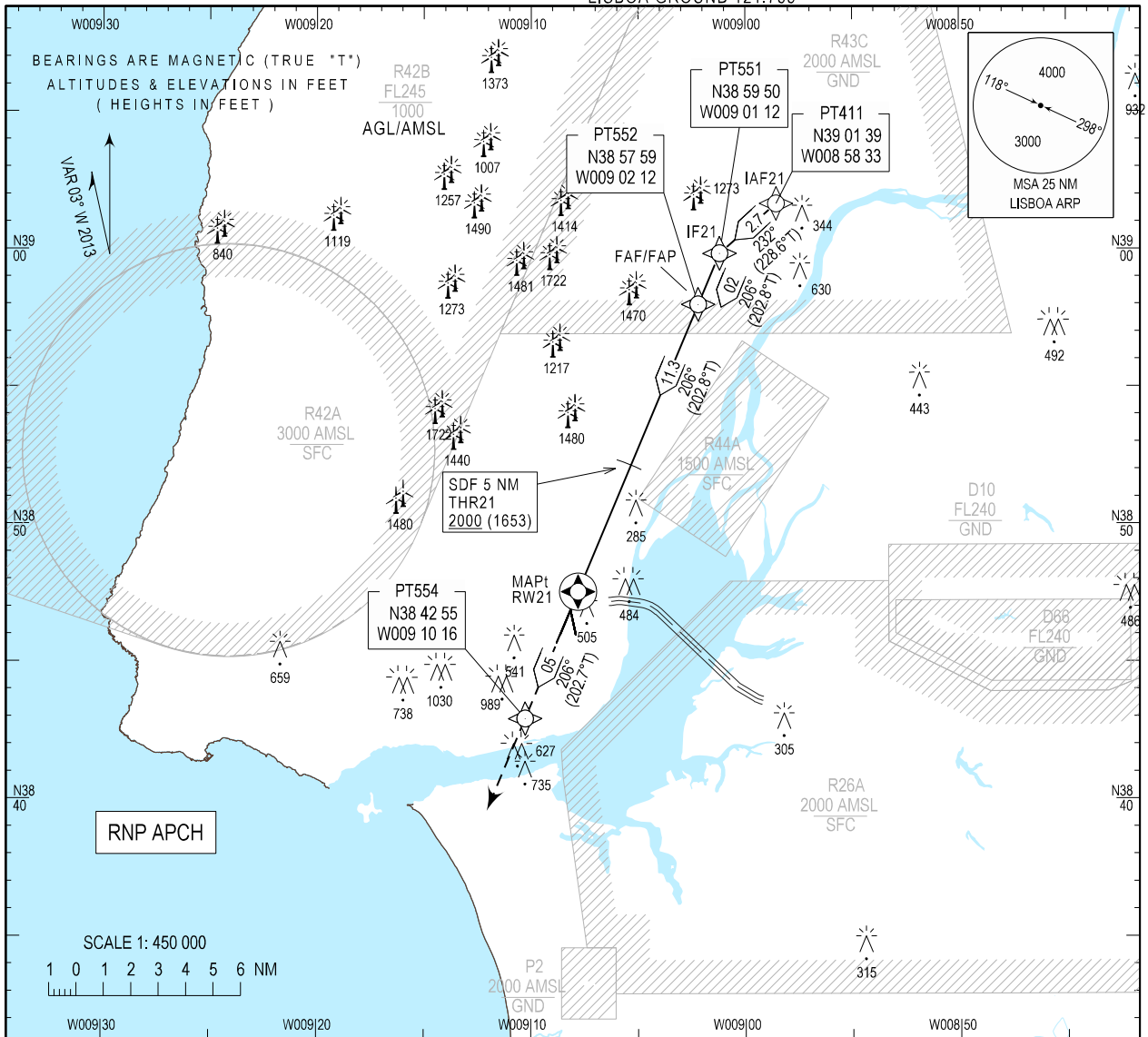
INSTRUMENT APPROACH CHART - ICAO

AD ELEV 374 ft  
HEIGHTS RELATED  
THR RWY 21 - ELEV 347 ft

LISBOA ARR INFORMATION 124.155  
LISBOA APPROACH 119.105  
LISBOA ARRIVAL 125.130  
LISBOA TOWER 118.105  
LISBOA GROUND 121.755

EGNOS  
CH 97981  
E21A  
RDH: 50

LISBOA / LPPT  
RNP RWY21



CAT	LPV		LNAV/VNAV		LNAV		CIRCLING	
	DA(H)	OCH	DA(H)	OCH	MDA(H)	OCH	MDA(H)	OCH
A		231					1500(1130)	1126
B	600 (253)	244	800 (453)	451	840 (493)	485		
C		252					1580(1210)	1206
D	610 (263)	262						

DIST THR NM	5	4	3	2	1
Altitude (height)	1988 (1641)	1670 (1323)	1351 (1004)	1033 (686)	714 (367)

rate of descend	kt	160	140	120	100	80
	ft/min	840	735	630	525	420

Chart IDENT changed, text box inserted.

Instrument Approach Procedure Coding Table  
Lisboa RNP RWY 21

Path Terminator	Waypoint				Course/Track MAG (True)	Dist NM	Turn Direction	Altitude	Speed	RNP Value NM	Navigation Specification	Remarks
	Identifier	Type	Flyover	Coordinates								
IF	PT411	IAF	-	390139.34N 0085833.34W	-	-	-	+4000FT	-	1.0	RNP APCH	-
TF	PT551	IF	-	385950.45N 0090111.84W	232 (228.6)	2.74	-	+4000FT	-	1.0	RNP APCH	-
TF	PT552	FAF/FAP	-	385759.16N 0090211.76W	206 (202.8)	2.01	-	@4000FT	-	0.3	RNP APCH	-
TF	RW21	MAPt (LNAV only)	Y	384732.36N 0090748.17W	206 (202.8)	11.32	-	-	-	1.0	RNP APCH	-
TF	PT554	-	-	384255.30N 0091016.09W	206 (202.7)	5.00	-	-	-	1.0	RNP APCH	-
VM		-	-		206 (202.7)	-	-	@FL070	-	1.0	RNP APCH	-

Input data

Operation Type	0
SBAS Provider	1
Airport Identifier	LPPT
Runway	21
Runway Direction	0
Approach Performance Designator	0
Route Indicator	
Reference Path Data Selector	0
Reference Path Identifier	E21A
LTP/FTP Latitude	384732.3600N
LTP/FTP Longitude	0090748.1700W
LTP/FTP Ellipsoidal Height (metres)	159.1
FPAP Latitude	384556.4600N
Delta FPAP Latitude (seconds)	-95.9000
FPAP Longitude	0090839.4800W
Delta FPAP Longitude (seconds)	-51.3100
Threshold Crossing Height	50.0
TCH Units Selector	0
Glidepath Angle (degrees)	3.00
Course Width (metres)	105.00
Length Offset (metres)	0
HAL (metres)	40.0
VAL (metres)	50.0

Output data

Data Block	10 14 10 10 0C 15 00 00 01 31 32 05 10 DA A5 10 6C F1 14 FC 37 1A C8 12 FD 24 6F FE F4 01 2C 01 64 00 C8 FA 8A A9 77 BF
Calculated CRC Value	8AA977BF

Required Additional Data

ICAO Code	LP
LTP/FTP Orthometric Height (metres)	105.7
FPAP Orthometric Height (metres)	100.3